



Installing a Nesting Box

Did You Know?

- There are estimated to be around 400 species of Australian fauna that use tree hollows.
- It takes more than 100 years for eucalypts to develop hollows suitable for occupancy by vertebrates.
- Natural tree hollows are declining due to the pressures of urbanisation and land clearing.
- You can provide a supplementary hollow for wildlife in your area by installing a nest box.
- Many species of frogs, reptiles, birds and mammals will utilise nest boxes.

Safety

- Ensure to wear appropriate footwear and sun protection.
- Ensure if using a ladder, that someone is on the ground to hold the ladder to keep it secure.

Choosing a Suitable Location

- Ensure that the nest box is protected from human disturbance, cats and away from roads.
- Place your nest box where it is protected from rain, cold and direct light.
- Place your nest box in a place where you can later observe it.
- Place at least 5m above ground in a north or north easterly direction.

Securing Your Nesting Box

Materials required:

1. multi strand wire
2. old garden hose
3. 2x springs
4. ladder; and
5. rope to secure ladder to tree.

This method requires a tree with a branch on the opposite side to the position of the nestbox.

1. Thread the wire through the hose. The wire should be 50% longer than the width of the tree and the hose pipe should be long enough so that it covers the wire wherever it comes in contact with the tree.
2. Fasten a spring at each end of the wire.
3. Fasten a length of wire to one of the springs and then loop the wire through the nestbox and tie off with the other spring.
4. Ensure there are no rough ends that could potentially harm wildlife.

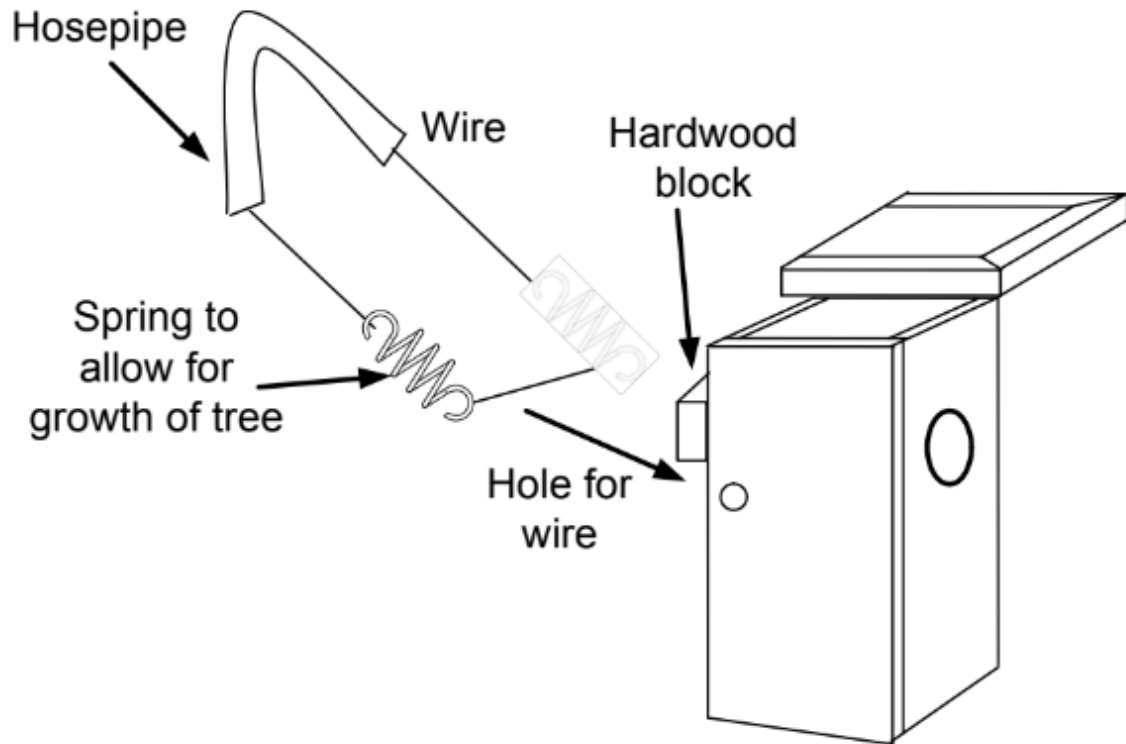


Figure 1 Nesting Box Installation Guide

Installing a Wildlife Camera

The installation of a wildlife camera near the entrance to the nesting box is completely optional, however it can provide valuable insights into whether your nesting box is being used by wildlife, how frequently, and by which species.

The wildlife cameras Cambooya Landcare have available for loan are Swift Enduro Regular models. The wildlife camera kit contains:

1. 1x camera
2. 1x SD card
3. 1x mounting strap
4. 1x mounting bracket

To set up the camera:

1. Open the camera housing (with the latch on the right-hand side) and insert 12 AA batteries in accordance with the + and – marked in the battery case as shown in Figure 2 below (note, batteries are not included in the wildlife camera kit).
2. Insert the SD card as shown in Figure 2 below. The camera must be off when the SD card is inserted.



Figure 2 Swift Enduro Wildlife Camera Inside View

1. Mount your camera with the camera lens facing the nesting box entrance using the supplied mounting strap or mounting bracket. You can mount the camera on a nearby tree branch. Ensure that the camera is secured tightly, and excess strap length is secured.
2. To ensure that the camera is in a good position and that the nesting box entrance is within the image frame, while the camera is secured in place, move the power switch into “setup” mode (see Figure 3 below). The screen will briefly light up with the Enduro logo, then you will be able to see what the camera can see. If you are satisfied with the camera position, proceed to step 3, otherwise readjust the camera position.
3. Power on the camera by switching the power switch to “on” (see Figure 3 below). The camera is now functional and ready to work upon movement (note: the screen will not light up). You will not hear or see the camera activating and taking images.

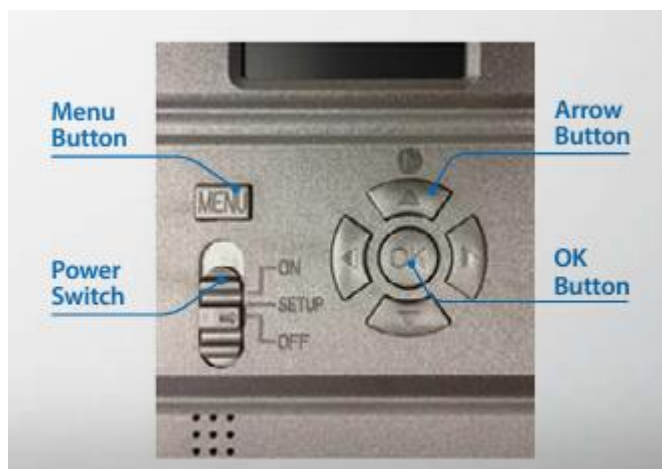


Figure 3 Swift Enduro Camera Control Panel Configuration

Viewing Images

In order to view the images captured by the wildlife camera:

1. Open the wildlife camera housing (with the latch on the right hand side).
2. Move the power switch into "off" mode (see Figure 3).
3. Remove the SD card.
4. Insert SD card into a computer or laptop.
5. Navigate to file explorer in your computer or laptop.
6. The SD card should display and allow you to view the images.

Optional – Solar Panel Installation For Wildlife Camera

The Endure Swift Enduro Camera can be used with an optional solar panel. The solar panel does not charge the batteries in the camera, but has it's own built in battery that the panel keeps charged. Batteries are not required in the camera when using the solar panel. Batteries can still be used in the camera at the same time, but they will only be used if the solar panel power ceases (they are a backup).

The solar panel kit contains:

1. Solar panel
2. 1x mounting bracket
3. 1x mounting strap
4. 1x wall adapter
5. 1x charging cable
6. 1x power cable

Before installing the solar panel:

1. Ensure the panel it is fully charged by using the wall adapter included.
2. Plug the cable from the solar panel kit into the "IN" port of the solar panel. You will know the panel is charging when the lights at the bottom of the panel start to flash progressively. Approximate charge time is 4 hours.
3. When fully charged, the panel will show 4 solid lights.

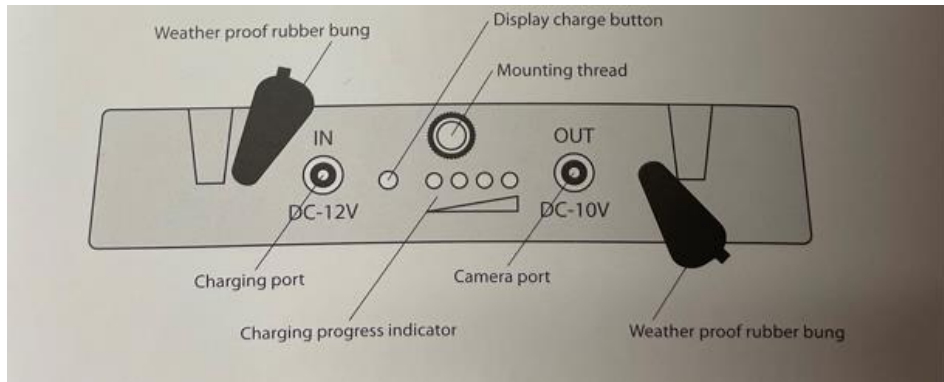


Figure 4 Solar Panel Control Panel Configuration

To install the solar panel:

4. Use the cable from the solar panel kit with the yellow tips to connect the camera to the solar panel. Plug one end into the "OUT" port of the solar panel, and the other end into your camera. Ensure the small rubber grommets on the cables are squashed into the camera connection area around the cable to prevent moisture and ants from accessing the camera. This is very important.
5. Use either the mounting bracket or mounting strap from the solar panel kit to mount the solar panel next to the wildlife camera (see Figure 5 below for an example configuration). Mount the panel facing upwards and angled to the north slightly for maximum benefit.

Solar battery tips:

- Avoid having shade over your panel.
- The panel will still work at night as it's internal battery provides power.
- In the event that the solar panel becomes exhausted, the camera will start using the installed AA batteries.
- If the AA batteries are exhausted before the battery is sufficiently charged, the camera will shut down and will need to be manually restarted.



Cambooya Landcare Association Inc
PO Box 66
Cambooya Q 4358

cambooyalandcare@gmail.com



Figure 5 Wildlife Camera and Solar Panel Example Mounting Configuration